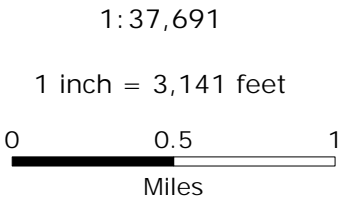


Current Land Use Map

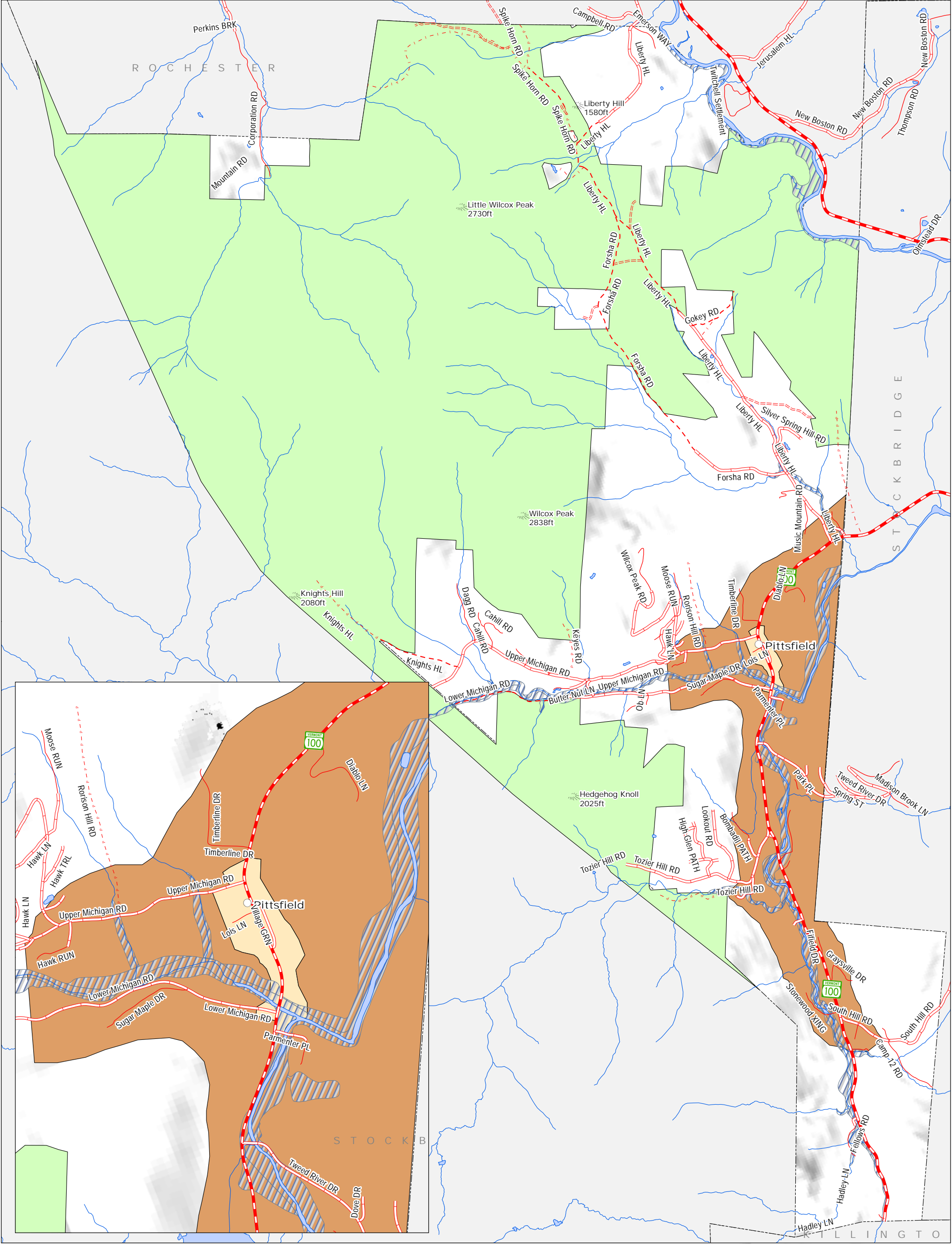
Pittsfield, Vermont

- VT route/TH cls 1
- TH cls 2
- TH cls 2 gravel
- TH cls 3
- TH cls 3 gravel
- TH cls 4
- trail
- private
- US route
- US interstate
- VT forest hwy
- Green Mountain National Forest
- State Designated Village



Adopted

Map 1 of 5



Future Land Use Map

Pittsfield, Vermont

- VT route/TH cls 1
- TH cls 2
- TH cls 2 gravel
- TH cls 3
- TH cls 3 gravel
- TH cls 4
- trail
- private
- US route
- US interstate
- VT forest hwy

- Future Land Use Areas
- Wildlife Area
 - Village Center Area
 - Route 100 Corridor Area
 - Flood Hazard Overlay Area
 - Residential Area

1:15,162

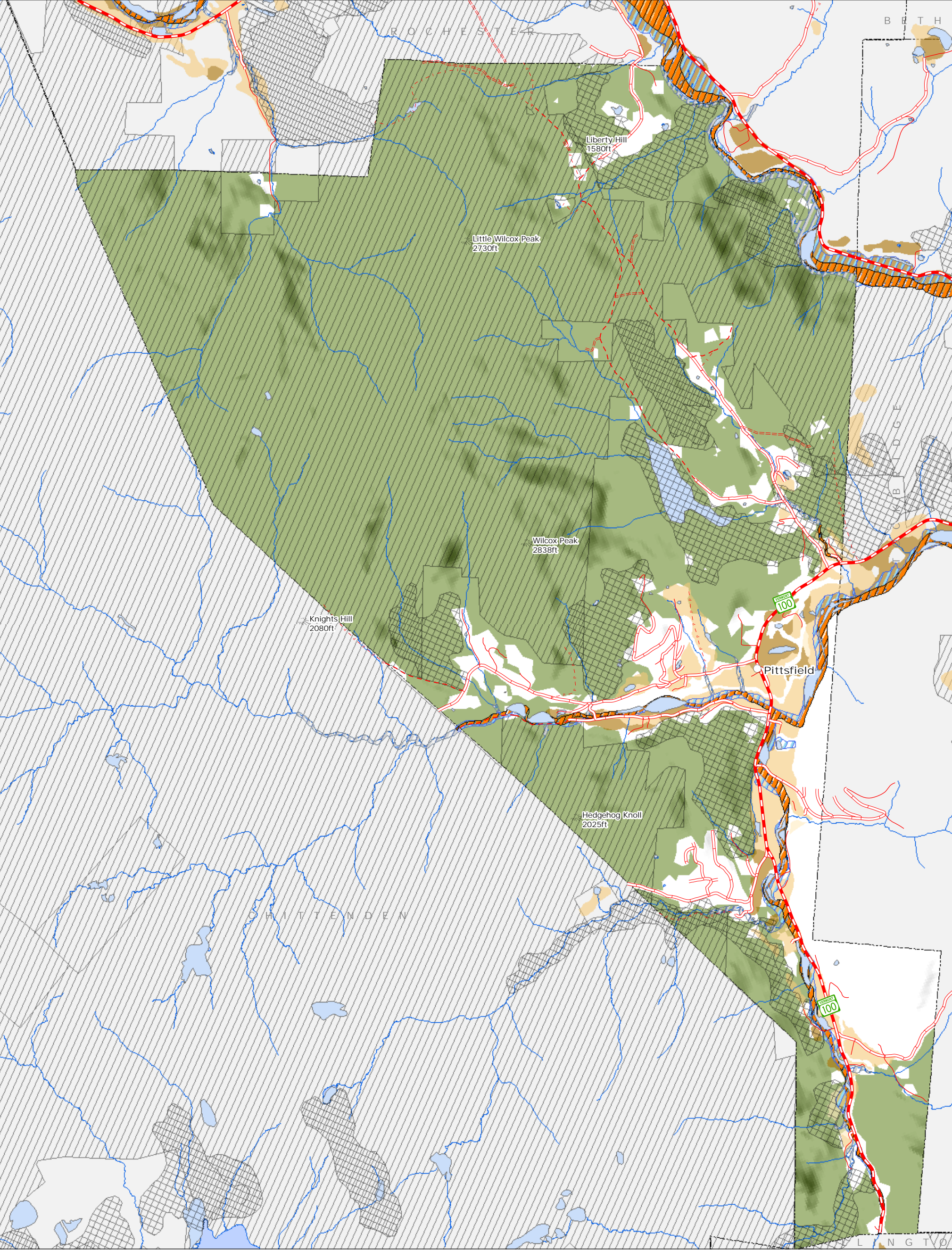
1 inch = 1,263 feet

0 0.5 1

Miles

Adopted

Map 2 of 5



Natural Resources Map
Pittsfield, Vermont

- Local

Prime

Statewide
- A,

AE,

AE, FLOODWAY
- Deer Wintering Areas

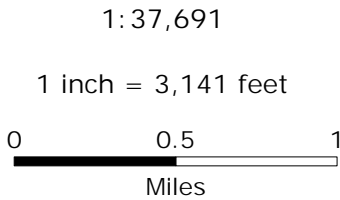
Conserved or Public Lands

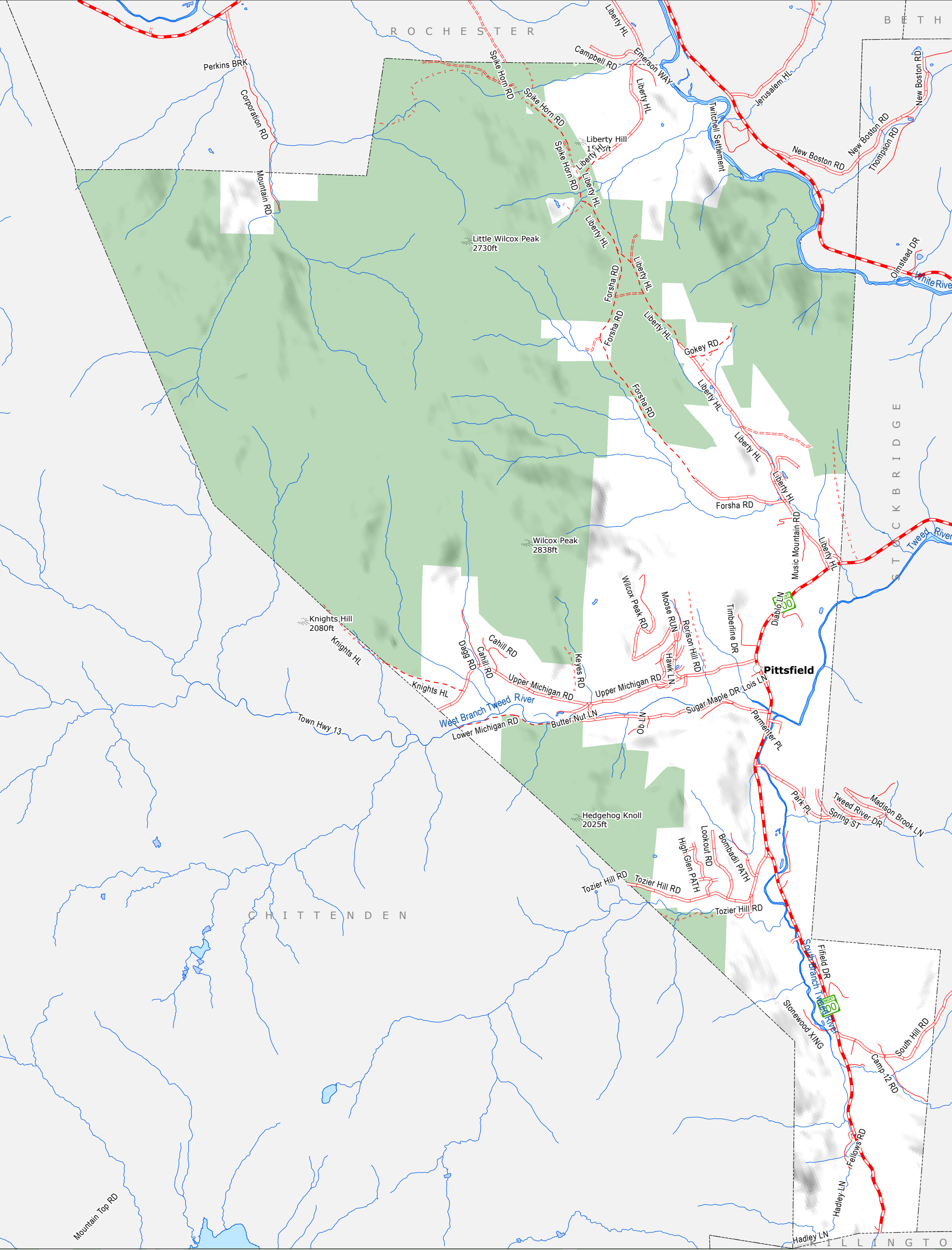
Vermont State Wetlands Inventory

Highest Priority Forest/Connectivity Blocks
- surface water

Adopted

Map 3 of 5





Current and Future
Transportation Map

- VT route/TH cls 1
- TH cls 2
- TH cls 2 gravel
- TH cls 3
- TH cls 3 gravel
- TH cls 4
- trail
- private
- US route
- US interstate
- VT forest hwy

1:37,636
1 inch = 3,136 feet
0 0.5 1
Miles

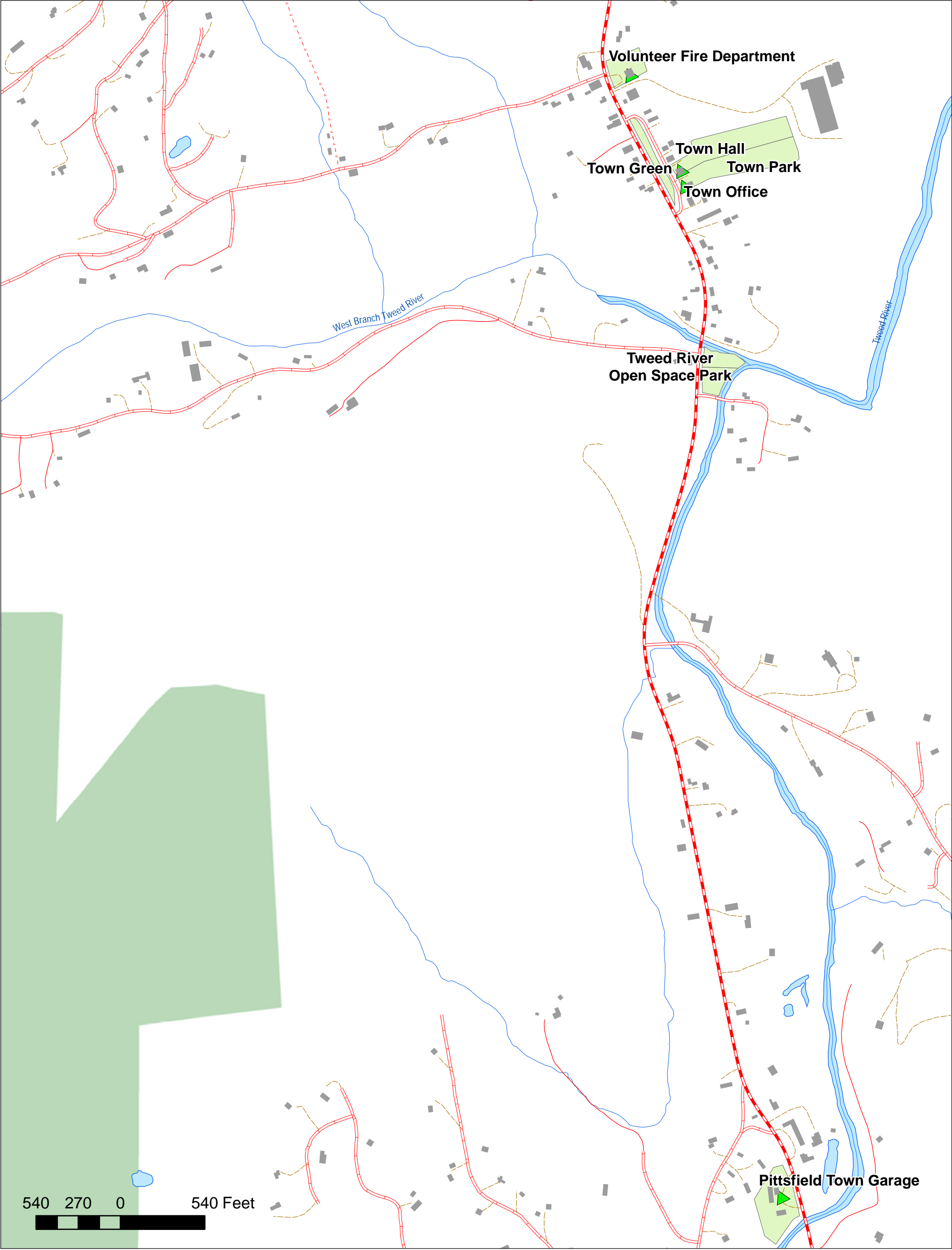
Adopted

Map 4 of 5

POLITICAL BOUNDARIES: Town Parcel Boundaries, VCGI, 2003.
ROADS: 1:5000 Digital Road Centerline Project, VAOT, 1991-1994 & E911 Board GPS Updates, 2003.
STRUCTURES: E911 Board GPS Updates, 2003.
SURFACE WATER: On-screen digitized from 1:5000 digital orthophotos using USGS 7 1/2' quadrangles and 1:20000 color infrared aerial photography as additional source material, VCGI for VHD-USGS, 2003.



Pittsfield, Vermont



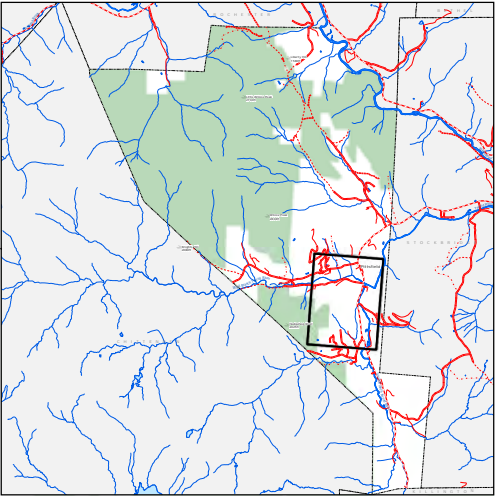
Current and Future
Utilities, Facilities and Education Map

- VT route/TH cls 1
- TH cls 2
- TH cls 2 gravel
- TH cls 3
- TH cls 3 gravel
- TH cls 4
- trail
- private
- US route
- US interstate
- VT forest hwy

Adopted

POLITICAL BOUNDARIES: Town Parcel Boundaries, VCGI, 2003.
ROADS: 1:5000 Digital Road Centerline Project, VAOT, 1991-1994 & E911 Board GPS Updates, 2003.
STRUCTURES: E911 Board GPS Updates, 2003.
SURFACE WATER: On-screen digitized from 1:5000 digital orthophotos using USGS 7 1/2' quadrangles and 1:20000 color infrared aerial photography as additional source material, VCGI for VHD-USGS, 2003.

Map 5 of 5



Pittsfield, Vermont



tbhash_tror

BIOMASS KW

• 19

• 20 - 375

HYDRO KW

• 15 - 100

• 101 - 500

• 501 - 2000

• 2001 - 37400

Capacity_k

• 15 - 25

• 26 - 100

• 101 - 500

• 501 - 2200

• Substations

• 3 Phase Power Lines

• Transmission Lines

• Lakes/Ponds

Existing Energy Generation

This map was created as part of a Regional Energy Planning Initiative being conducted by the Two Rivers-Ottawaquechee Regional Commission, and the Vermont Public Service Department.

PITTSFIELD

Ground-mounted PV
15kw

Roof-Mounted PV
50kw

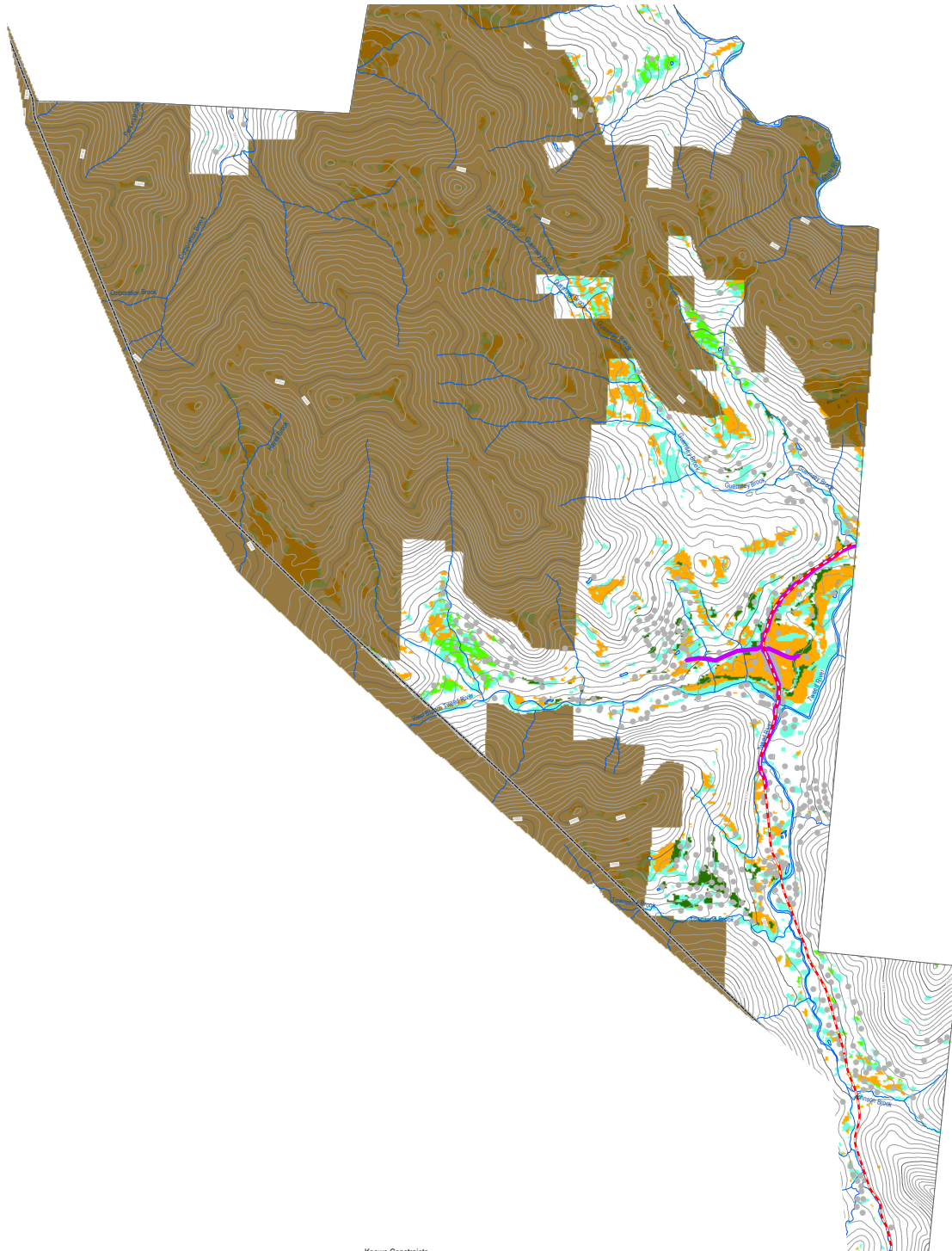
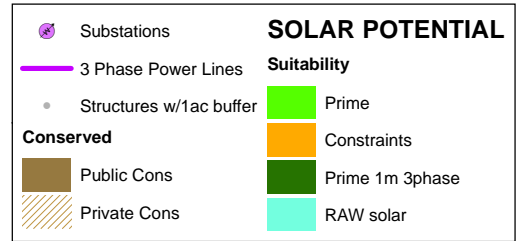
0 0.45 0.9 1.8 Miles



Solar Energy Potential

This map was created as part of a Regional Energy Planning Initiative.
Created: 2020

PITTSFIELD



Solar

This map shows areas of potential electricity generation from solar energy. It includes areas with good access to solar radiation and also considers other conditions that may limit the feasibility of solar energy development. These limiting factors are referred to as constraints. Areas of prime solar potential exist where the natural conditions make development feasible and no constraints are present.

These maps are designed to initially identify areas and follow-up on-site work is required to verify the areas are feasible for projects. They are subject to revision and are NOT intended to green-light or fast-track projects.

DARK GREEN Prime: No Constraints within 1 mile 3 phase power
GREEN Prime: No Constraints no known or possible constraints present
ORANGE Constraints: no known but at least one or more possible constraints
BLUE GREEN Raw: potential with constraints

Known Constraints
Vernal Pools (confirmed and unconfirmed layers)
DEC River Corridors
FEMA Floodways
State-significant Natural Communities and Rare, Threatened, and Endangered Species
Wilderness Areas, including National Wilderness Areas
Class 1 and Class 2 Wetlands (VSWI and advisory layers)

Possible Constraints
Agricultural Soils (VT Agriculturally Important Soil Units)
FEMA Special Flood Hazard Areas
Protected Lands (Updated 07/26/2016.)
Act 250 Agricultural Soil Mitigation areas
Deer Wintering Areas
ANR's Vermont Conservation Design Highest Priority Forest Block Datasets
Forest Blocks - Connectivity
Forest Blocks - Interior
Forest Blocks - Physical Land Division
Hydric Soils

TRORC Unsuitable areas (included in known constraints)
FEMA Floodways
Wilderness Areas, including National Wilderness Areas
Class 1 Wetland



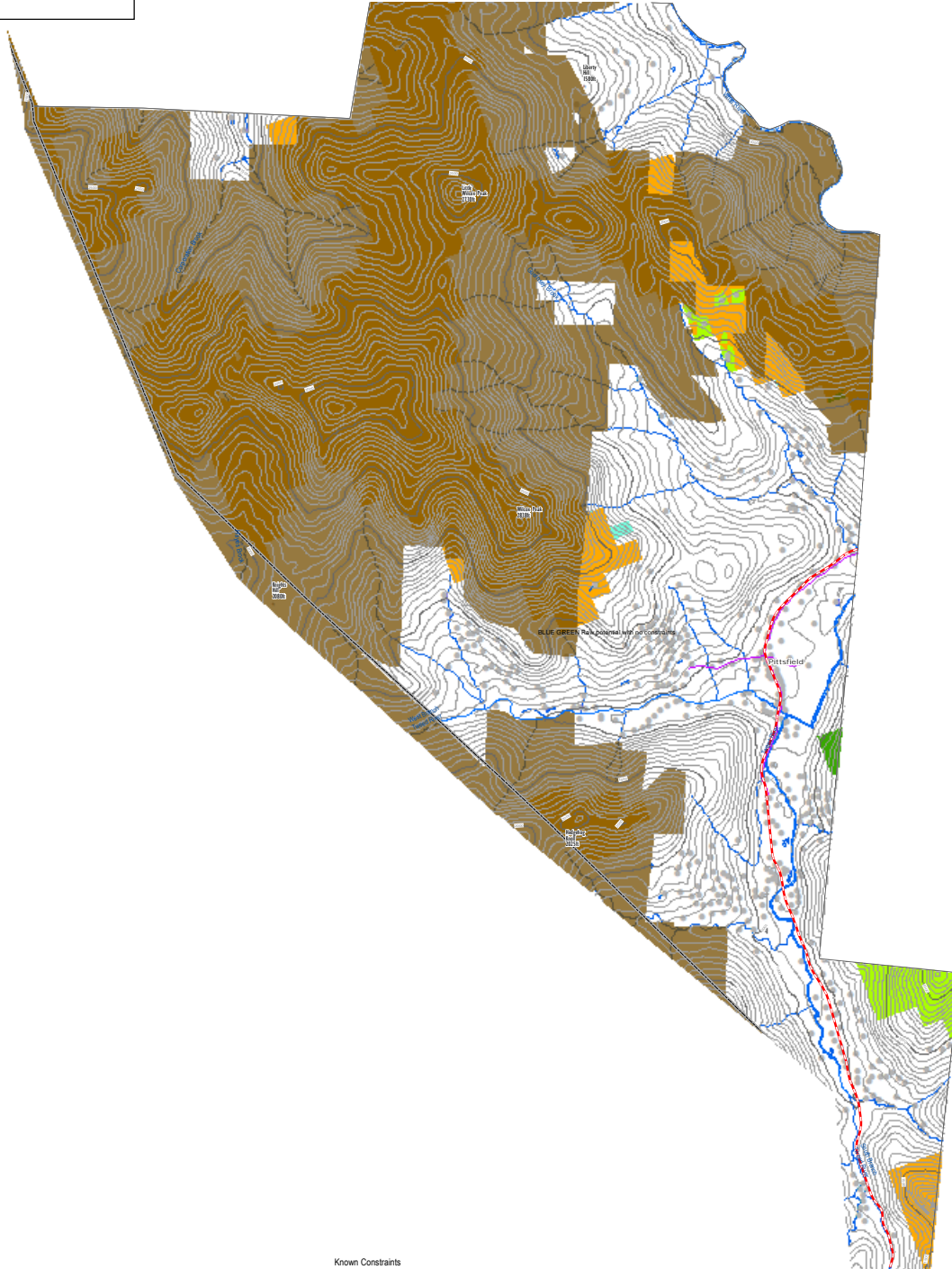
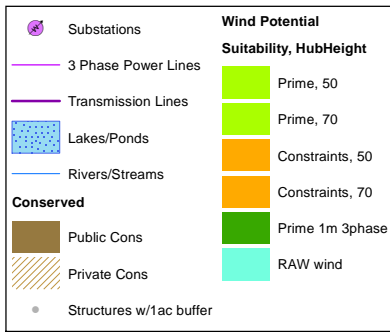
TRORC
Two Rivers-Ottawaquechee
REGIONAL COMMISSION
trorc.org

0 0.475 0.95 1.9 Miles

Wind Energy Potential

This map was created as part of a Regional Energy Planning Initiative.
Created: 2020

PITTSFIELD



Wind
This map shows areas of potential wind energy development. It includes areas with good access to wind resources and also considers other conditions that may limit the feasibility of wind energy development. These limiting factors are referred to as constraints. Areas of prime wind potential exist where the natural conditions make development feasible and no constraints are present.

These maps are designed to initially identify areas and follow-up on-site work is required to verify the areas are feasible for projects. They are subject to revision and are NOT intended to green-light or fast-track projects.

DARK GREEN Prime: No Constraints within 1 mile 3 phase power
GREEN Prime: No Constraints no known or possible constraints present
ORANGE Constraints no known but at least one or more possible constraints
BLUE GREEN Raw potential with constraints

Known Constraints
Vernal Pools (confirmed and unconfirmed layers)
DEC River Corridors
FEMA Floodways
State-significant Natural Communities and Rare, Threatened, and Endangered Species
Wilderness Areas, including National Wilderness Areas
Class 1 and Class 2 Wetlands (VSWI and advisory layers)

Possible Constraints
Agricultural Soils (VT Agriculturally Important Soil Units)
FEMA Special Flood Hazard Areas
Protected Lands (Updated 07/26/2016)
Act 250 Agricultural Soil Mitigation areas
Deer Wintering Areas
ANR's Vermont Conservation Design Highest Priority Forest Block Datasets
Forest Blocks - Connectivity
Forest Blocks - Interior
Forest Blocks - Physical Land Division
Hydric Soils

TRORC Unsuitable areas (included in known constraints)
FEMA Floodways
Wilderness Areas, including National Wilderness Areas
Class 1 Wetland



TRORC
Two Rivers-Ottawaquechee
REGIONAL COMMISSION
trorc.org

0 0.5 1 2 Miles